

## Light efficiency:

**110 Lumen/Watt**

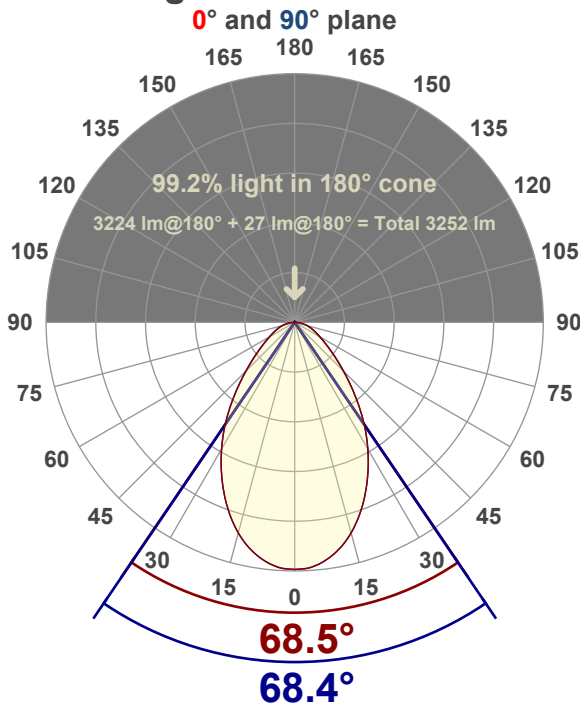
## Color temperature:

**3073 K**

## Light quality:

**CRI:83.2, R<sub>g</sub>:93.7, R<sub>r</sub>:85.3****P: 3 / V: - / F: -****Output: 3224 lm****Peak: 2186 cd****Power: 29.3 W****Voltage: 121 V****Current: 0.244 A****PF: 0.99****THD: 5.88 %**

## Angular Distribution



Product name:

**EDGE-22-WH - 30K 30W**

Test Date:

**6/13/2019**

Beam Angle (50% of the brightness of the centre):

**68.4°**

Field Angle (10% of the brightness of the centre):

**126.6°**

Cut Off Angle (2.5% of the brightness of the centre):

**163.6°**

## Beam Details

\*measured at centre of beam

Mounting Height (feet)\(meter)	Lux*	Footcandles*	Beam width (feet) / (meter)
4 ft / 1.2 m	1469 lx	137 fc	5.4 ft / 1.7 m
8 ft / 2.4 m	367 lx	34 fc	10.9 ft / 3.3 m
12 ft / 3.7 m	163 lx	15 fc	16.3 ft / 5 m
16 ft / 4.9 m	92 lx	9 fc	21.7 ft / 6.6 m
20 ft / 6.1 m	59 lx	5 fc	27.2 ft / 8.3 m

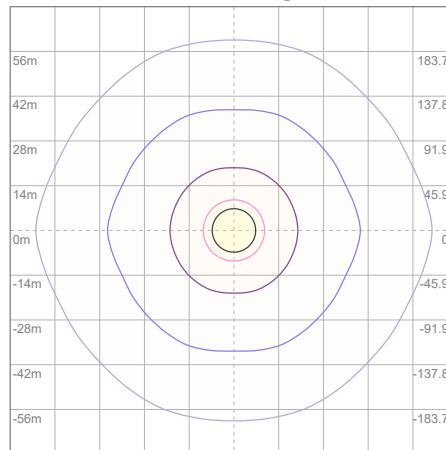
Beam center

# Photometric Testing Report

## Zonal Lumen Summary

Zone	Lumen	%Luminaire
0-30	1438	44.60%
0-40	2093	64.92%
0-60	2873	89.11%
60-90	351	10.89%
70-100	152	4.71%
90-120	0.000	0.00%
0-90	3224	100.00%
90-180	0.000	0.00%
0-180	3224	100.00%

## ISO Lux Diagram



Lux at center:	235 lx
3%	7.05 lx
5%	11.75 lx
10%	23.50 lx
30%	70.50 lx
50%	117.50 lx

### Conditions:

Number of planes: 8

Lux distribution on a surface when lamp is mounted at 3.05 meters from the surface.

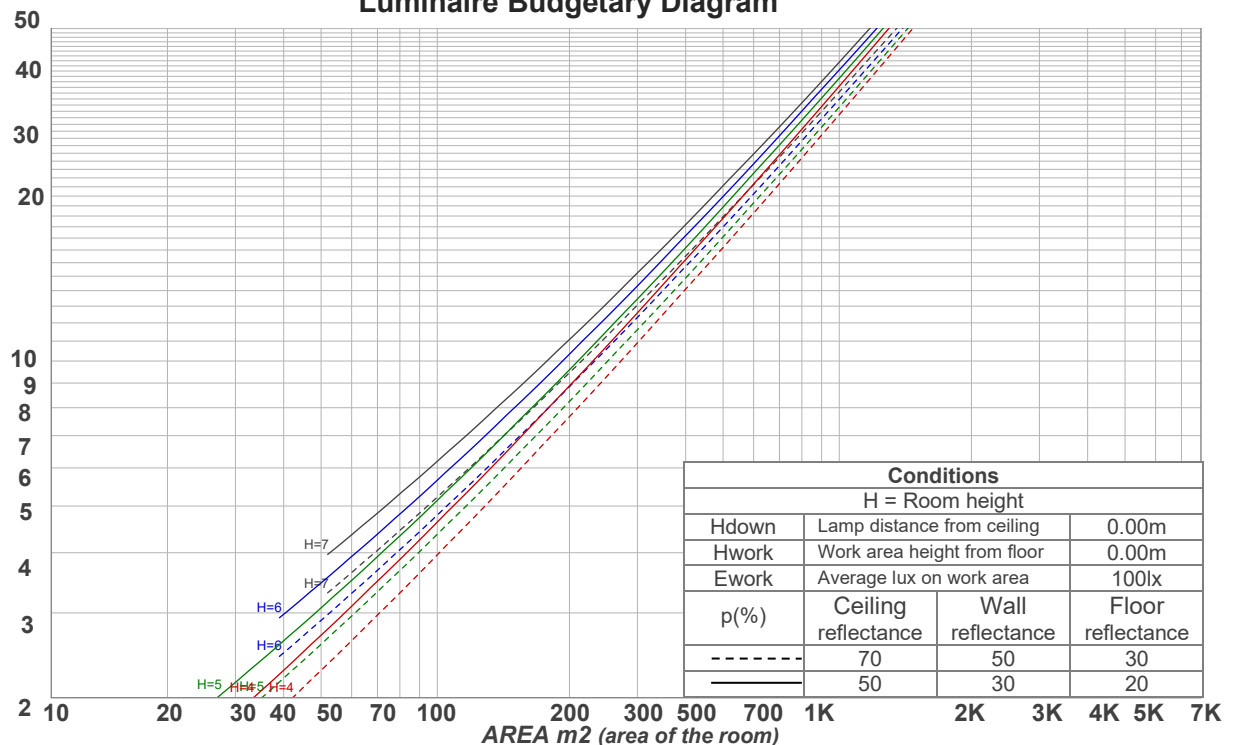
Mounting height: 3.05 meters (10 feet)

## Coefficients of Utilization

Ceiling reflectance	80				70				50			30			10			0
Wall reflectance	70	50	30	10	70	50	30	10	50	30	10	50	30	10	50	30	10	0
Floor reflectance	20	20	20	20	20	20	20	20	20	20	20	20	20	20	20	20	20	0
RCR	(RCR: Room Cavity Ratio)				Room Values are expressed as percentage of Lumens delivered to the task surface													
0	119	119	119	119	116	116	116	116	111	111	111	106	106	106	102	102	102	100
1	111	107	104	100	108	105	102	99	101	98	96	97	95	93	93	92	90	88
2	103	96	91	86	100	94	89	85	91	87	83	88	84	81	85	82	79	77
3	96	87	80	75	93	85	79	74	82	77	73	80	75	72	77	74	70	68
4	89	79	71	66	87	78	71	65	75	69	65	73	68	64	71	67	63	61
5	83	72	64	59	81	71	64	58	69	63	58	67	62	57	65	61	57	55
6	78	66	58	53	76	65	58	53	64	57	52	62	56	52	60	55	51	50
7	73	61	53	48	71	60	53	48	59	52	48	57	52	47	56	51	47	45
8	68	56	49	44	67	56	49	44	55	48	44	53	48	43	52	47	43	41
9	64	53	45	40	63	52	45	40	51	45	40	50	44	40	49	44	40	38
10	61	49	42	37	60	49	42	37	48	41	37	47	41	37	46	41	37	35

LAMPS (number of lamps)

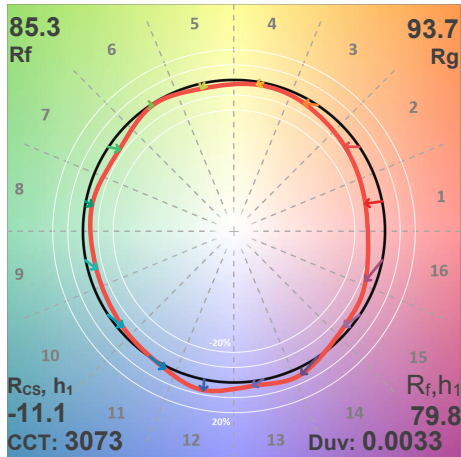
## Luminaire Budgetary Diagram



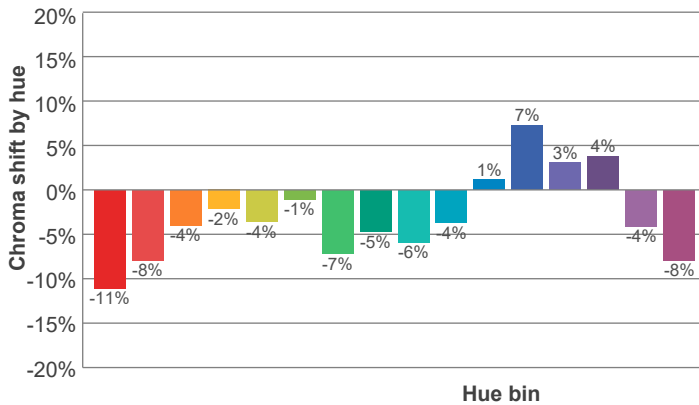
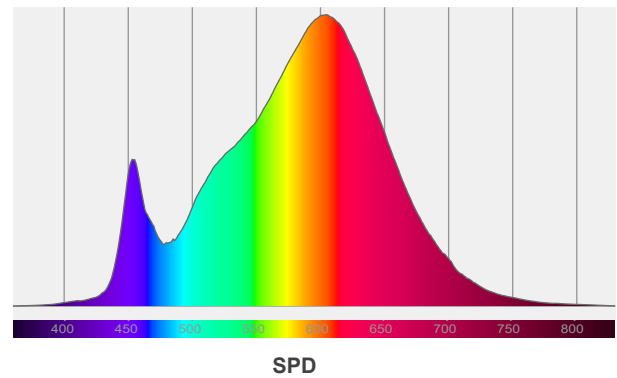
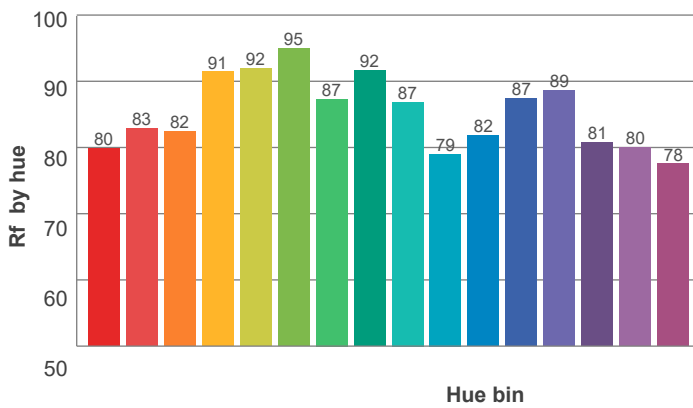
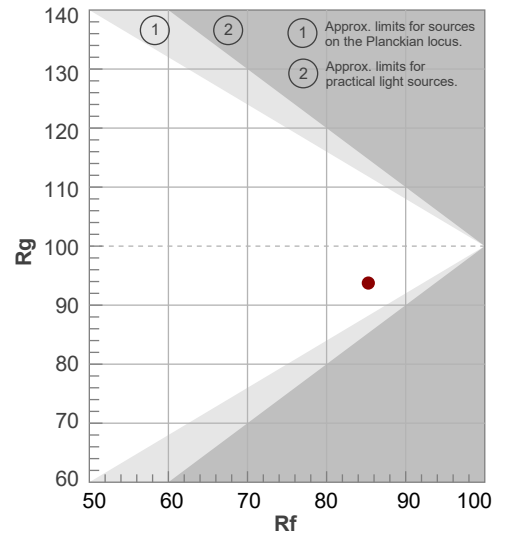
## Photometric Testing Report

ANSI/IES TM-30-18

P: 3 / V: - / F: -



Hue Bin	R <sub>f</sub>	Shifts (%)	
		Chroma	Hue
1	80	-11%	1%
2	83	-8%	5%
3	82	-4%	8%
4	91	-2%	4%
5	92	-4%	2%
6	95	-1%	-2%
7	87	-7%	-3%
8	92	-5%	2%
9	87	-6%	7%
10	79	-4%	12%
11	82	1%	12%
12	87	7%	1%
13	89	3%	-8%
14	81	4%	-15%
15	80	-4%	-12%
16	78	-8%	-15%



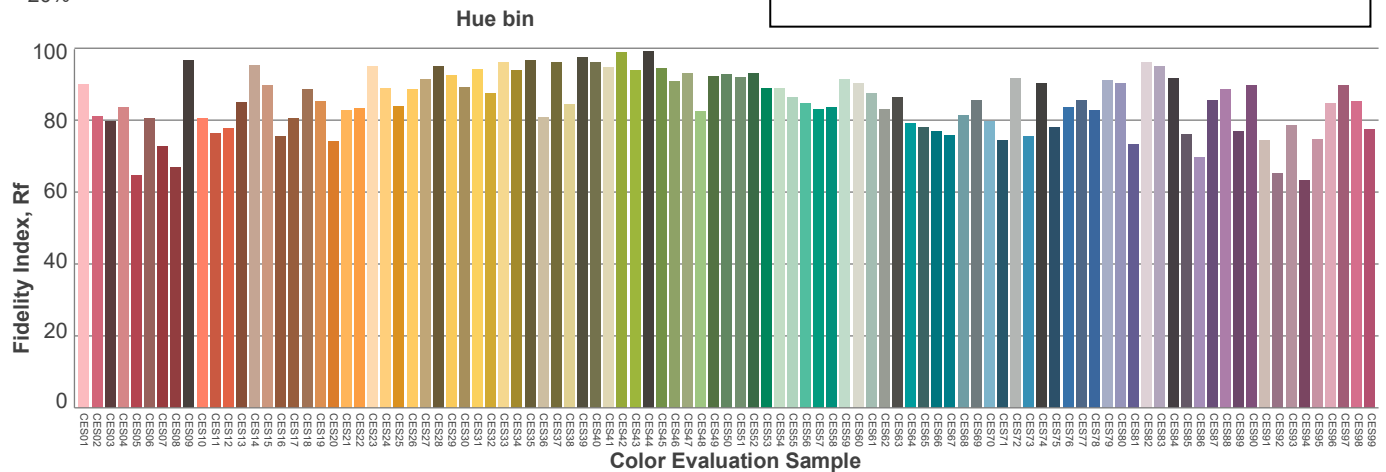
Red: 29.2%, Power=18.1mW

Blue: 9.4%, Power=17.5mW

Green: 27.3%, Power=37.4mW

UVA: 0.4%, Power=0.1mW

Dominant Wavelength: 582nm

1<sup>st</sup> Peak Wavelength: 603nm2<sup>nd</sup> Peak Wavelength: 452nm

## Glare Evaluation According to UGR

Corrected, comprehensive UGR table according to 117-1995, S/H ratio=0.25

p Ceiling		70	70	50	50	30	70	70	50	50	30
p Walls		50	30	50	30	30	50	30	50	30	30
p Floor		20	20	20	20	20	20	20	20	20	20
Room size H = mounting height above eye level  X      Y		Viewing direction at right angles to lamp axis					Viewing direction parallel to lamp axis				
2H	2H	13.2	14.2	13.4	14.4	14.6	13.2	14.2	13.4	14.5	14.7
	3H	14.0	15.1	14.4	15.3	15.5	14.1	15.1	14.5	15.4	15.6
	4H	14.5	15.5	14.9	15.8	16.0	14.6	15.6	15.0	15.8	16.1
	6H	15.0	15.8	15.3	16.1	16.5	15.0	15.9	15.3	16.2	16.5
	8H	15.1	15.9	15.4	16.2	16.6	15.2	16.0	15.5	16.3	16.7
	12H	15.2	16.0	15.5	16.3	16.7	15.2	16.0	15.6	16.4	16.8
4H	2H	13.5	14.5	13.9	14.7	15.0	13.5	14.5	13.9	14.7	15.0
	3H	14.7	15.5	15.1	15.9	16.3	14.8	15.6	15.1	15.9	16.3
	4H	15.3	16.0	15.7	16.4	17.0	15.3	16.0	15.7	16.5	17.0
	6H	15.8	16.5	16.3	16.9	17.2	15.8	16.6	16.3	16.9	17.3
	8H	16.0	16.6	16.5	17.0	17.4	16.0	16.7	16.5	17.0	17.4
	12H	16.1	16.6	16.6	17.0	17.5	16.1	16.7	16.6	17.1	17.6
8H	4H	15.5	16.2	16.0	16.5	16.9	15.5	16.2	16.0	16.5	16.9
	6H	16.2	16.7	16.7	17.1	17.7	16.2	16.7	16.7	17.2	17.7
	8H	16.5	16.9	17.0	17.4	18.0	16.5	16.9	17.0	17.4	18.1
	12H	16.6	17.0	17.2	17.5	18.1	16.7	17.0	17.3	17.5	18.1
12H	4H	15.5	16.1	16.0	16.5	16.9	15.5	16.1	16.0	16.5	17.0
	6H	16.3	16.7	16.8	17.2	17.8	16.3	16.7	16.8	17.2	17.9
	8H	16.5	16.9	17.1	17.4	18.0	16.6	16.9	17.2	17.4	18.0
Variation of the observer position for the luminaire distance S											
S = 1.0H		0.2 / -0.3					0.2 / -0.3				
S = 1.5H		0.6 / -0.6					0.6 / -0.6				
S = 2.0H		1.1 / -0.9					1.2 / -0.9				
Corrected glare indices referring to 3224 lm total luminous flux											

**IESNA TM-15-07**

**Luminaire Classification System  
For Outdoor Luminaires**

**BUG rating  
B2 U0 G1**

**UL 90-100°**

0 lm  
0%

**BVH 80-90°**

16.9 lm  
0.5%

**BH 60-80°**

159 lm  
4.9%

**BM 30-60°**

718 lm  
22.1%

**BL 0-30°**

718.2 lm  
22.1%

**UH 100-180°**

0 lm  
0%

**UL 90-100°**

0 lm  
0%

**FVH 80-90°**

16.9 lm  
0.5%

**FH 60-80°**

159 lm  
4.9%

**FM 30-80°**

718 lm  
22.1%

**FL 0-30°**

718.2 lm  
22.1%

